

# PLANET SNOW

ようこそ、プラネット・スノーへ  
Welcome to PLANET SNOW

upas mintar / upas nociw

# SIAF 2027

札幌の冬が変わる 世界でここだけの特別なアートイベント  
Sapporo's Changing Winter—A Unique Art Event Found Nowhere Else in the World

## 札幌国際芸術祭

### SAPPORO INTERNATIONAL ART FESTIVAL

Usa Mosir un Askay utar Sapporo otta Uekarpa

2027 1.16<sup>SAT</sup> \_ 2.21<sup>SUN</sup>

札幌市内8会場を中心に開催  
Held across 8 venues in Sapporo

主催：札幌国際芸術祭実行委員会／札幌市 助成：令和7年度 文化庁 文化芸術創造拠点形成事業／在日スイス大使館  
Organized by Sapporo International Art Festival Executive Committee and City of Sapporo  
Supported by the Agency for Cultural Affairs, Government of Japan, Fiscal Year 2025 / Embassy of Switzerland in Japan



The City of Sapporo is responsible for the choice and the presentation of the facts and opinions in this material, which are not necessarily those of UNESCO and do not constitute this Organization.



# A Snow-Covered Earth is a Miracle Planet—— Sapporo Becomes "Planet Snow," a Gathering Point for Artworks and New Expressions from Japan and Around the World

**PLANET  
SNOW**  
upas mintar / upas nociw  
**SIAF2027**

There is approximately one year remaining before the second winter edition of the Sapporo International Art Festival (SIAF)—SIAF2027. Building on the initiatives of SIAF2024, which leveraged Sapporo's uniqueness, the upcoming edition of SIAF aims to create an art festival where everyone, especially locals, can easily participate and engage.

## Transforming Sapporo into the Stage of a Grand Narrative Calling for Action Towards the Future Through an Art Festival That Reconsiders "Humanity," "Earth," and "the Universe"

The theme of SIAF2027 is "**PLANET SNOW — upas mintar / upas nociw.**"

In envisioning Sapporo as Planet Snow, the theme can be expressed through two phrases in the Ainu language. For those who live in Sapporo, it is "upas mintar (snow garden)"; for those visiting from afar, it is "upas nociw (snow star)." Covered in white snow, SIAF2027 will become the stage for a grand narrative that surrounds the future of humanity and the cosmos. [→See pg. 2 for details.]



Photo by TAKUMA Noriko

## Creating New Ways to Utilize Sapporo's Infrastructure and Public Spaces Novel Venue Compositions Marking a Major Change from Previous Editions

Reexamining Sapporo's strengths and resources and creating new value and methods of utilization are among SIAF's core missions. For the upcoming edition, compelling new venues rich in materials and diverse content have joined the lineup: the Sapporo Science Center and the Hokkaido Museum. In addition, the Sapporo Citizens Gallery has been chosen as a key stage for the overarching narrative. Together with venues that highlight the characteristics of a snowy city, such as Moerenuma Park and the Sapporo Snow Festival, the SIAF2027 festival layout marks a new beginning for the art festival.

[→See pg. 3-4 for details]



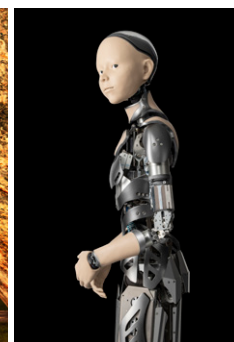
## New Team Members and the First Group of Participating Artists Selected from Japan and Abroad! Pre-Events Offering a Sneak Peek at SIAF2027 Also Announced

The production team shaping SIAF2027 is steadily coming together. In addition to the Director Team and SIAF Advisor, a group of curators, responsible for exhibition programs, and a dramaturg, a role that will significantly enrich the story and overall visitor experience, have been added. Furthermore, the first list of participating artists, selected from both Japan and abroad, has been decided. The story of Planet Snow is finally starting to unravel. [→See pg. 5-8 for details]

This winter, pre-events will be held, offering an early look at a work by one of the participating artists! [→See pg. 10-11 for details]



ENESS "Iwagumi Air Scape" Photo by Finbarr FALLON



ISHIGURO Hiroshi /  
FUTURE OF LIFE Laboratory  
"Yamatoroid"

@FUTURE OF LIFE



Built on the idea of "revitalizing a city through the creative power of cultural arts," Sapporo issued the Sapporo Ideas City Declaration in 2006. In 2013, it was designated a UNESCO Creative City of Media Arts, and the Sapporo International Art Festival was launched as its flagship initiative. SIAF2027, the second edition to be held in the winter, will introduce new and compelling venues and present an internationally diverse program stretching out from the city center. This festival aims to deepen collaborations with citizens, businesses, and local organizations, generate new values, and encourage thoughts on the future. Please look forward to this upcoming edition.

**AKIMOTO Katsuhiko**

Mayor of Sapporo / Chairperson of the Sapporo International Art Festival Executive Committee

# From LAST SNOW to PLANET SNOW: The World's Only Art Festival Uniting City and Snow Enters a New Orbit

PLANET  
SNOW  
upas mintar / upas nociw  
SIAF2027

Sapporo is a global anomaly—a local metropolis with a population of nearly two million people nestled in a region that receives almost five meters of snowfall each year. Warmly embracing the city's characteristics in a bid to leverage "what makes Sapporo, Sapporo," we adopted the theme LAST SNOW for the previous Sapporo International Art Festival (SIAF). Beginning with the microscopic world of snow crystals, the theme evolved into a universe of thought reflecting on our home planet's current realities—climate change, pandemics, division, war—a theme that called for imagination, creation, and action for the future, uniting artists and residents alike who responded with energy and insight. Our theme for the next edition of the festival, SIAF2027, is "PLANET SNOW — upas mintar / upas nociw" (Ainu language translation: "snow garden / snow star"). The festival will once again revolve around snow, but this time, participants' imaginations will be pushed beyond Earth and into the cosmos, setting the scene for SIAF's latest evolution since 2024.

If Sapporo were not a city, but a snow-covered planet somewhere in our universe, what technologies would shape life and culture there? What vast landscapes might we gaze upon? And from that distant snowy planet, how might Earth appear when we look out at it?

For SIAF2027, a museum, science center, ward office, and other everyday facilities in the city will act as core festival venues. For residents, familiar winter landscapes will take on new meaning; meanwhile, visitors will have the opportunity to experience something truly extraordinary. No matter who you may be or where you may come from, SIAF2027 cordially invites you to participate in a story that sparks the imagery and sensation of crash-landing in an unknown world: Planet Snow.

Of course, the bridge between SIAF2024 and SIAF2027 is more than merely thematic. We aim to carry forward the core values underpinning SIAF's identity to further expand the festival via the following three visions:

## **Making the Most of Sapporo's Uniqueness**

Winter's cold and heavy snowfall are often seen as challenges to be overcome. However, we aspire to elevate these traits into Sapporo's distinctive strengths and connect them to the future. The key to this transformation is none other than the ideas and lived experiences of the people who call this city home.

## **A Festival for the People; Open and Accessible to All**

We are continuing to develop a vibrant array of community-oriented experiments and programs to make SIAF an accessible platform that welcomes each and every resident. Alongside expanding our current resident-led venue guide initiative, we are also working to curate experiences that people of all abilities and circumstances can enjoy.

## **Constructing a Sustainable Framework**

To ensure the festival takes root across Sapporo rather than ending as a fleeting triennial celebration, we have revamped our organizational structure. A four-person team of directors, based primarily in Sapporo and supported by ongoing outreach activities such as continuous school visits, will come together to guarantee that the festival's impact endures.

The three visions listed above build directly on the goals set out in SIAF2024, namely, to be an "engine for creativity," to serve as a form of "cultural infrastructure," and to inspire "citizen participation." Each represents a commitment to putting these ideas into practice and giving them tangible forms.

With SIAF2027 now just a year away, we set out on our voyage from LAST SNOW to PLANET SNOW. Join us in bringing to life an art festival that reinvents the city. We look forward to welcoming you to Planet Snow in January 2027.

**SIAF2027 Director Team**

OGAWA Hideaki / HOSOKAWA Asami / URUSHI Takahiro / MARUTA Tomoaki  
December 19, 2025

# The Eight Venues of Planet Snow

**PLANET  
SNOW**  
upas mintar / upas nociw  
**SIAF 2027**

For SIAF2027, the venue structure will undergo a major transformation from previous editions. At the heart of the narrative is the Sapporo Citizens Gallery. In addition, the Sapporo Science Center, the Hokkaido Museum, and even the Chuo Ward Office Complex have been selected as SIAF venues. Including these four facilities participating in SIAF for the first time, this upcoming edition features eight venues. This selection will be unique to SIAF2027, expanding the "multiplication of art" across different fields and genres. Each venue will utilize its individuality to unfold into its own distinct world.

## 1. Sapporo Citizens Gallery

Minami 2-jo Higashi 6-chome,  
Chuo-ku, Sapporo

**Planning:** KANAZAWA Kodama



Photo by KUSUMI Erika

Opened in 1982 as a venue for citizens to exhibit and appreciate works created through their daily artistic activities, the Sapporo Citizens Gallery hosts several exhibitions throughout the year, including open-call exhibitions featuring paintings, calligraphy, sculptures, and crafts. This venue will serve as the departure point for the journey through Planet Snow, showcasing artists connected to Hokkaido and those exhibiting in Japan for the first time.

## 2. Sapporo Science Center

Atsubetsu-chuo 1-jo 5-chome  
2-20, Atsubetsu-ku, Sapporo

**Planning:** NISHI Tsubasa



Photo by KUSUMI Erika

Opened in 1981 as a "science museum of the northern region," the Sapporo Science Center—where SIAF Advisor YAMAZAKI Naoko serves as Honorary Director—highlights its identity as a science museum in a snowy, cold region through features such as the Low Temperature Playground that allows visitors to experience a -30°C environment. The museum also houses a planetarium capable of projecting approximately 100 million stars, as well as astronomy and earth science zones where visitors can learn about various topics ranging from the creation of the universe to the formation of Hokkaido, making it a very popular destination for many elementary and junior high school students. This familiar space for Sapporo citizens will be transformed into a new site of experiences through SIAF's unique lens.

## 3. Hokkaido Museum

Atsubetsucho Konopporo 53-2,  
Atsubetsu-ku, Sapporo

**Planning:** HOSOKAWA Asami

**Artist:** ISHIGURO Hiroshi /  
FUTURE OF LIFE Laboratory



Established through the integration of the Historical Museum of Hokkaido (opened in 1971) and the Hokkaido Ainu Culture Research Center (opened in 1994), the Hokkaido Museum has served as a comprehensive prefectural museum introducing the region's nature, history, and culture since 2015. Since then, in addition to permanent and special exhibitions, it has conducted research on the relationship between the natural environment and people, the Ainu culture, and the lives of migrants from Honshu (mainland Japan). Working in close collaboration with the museum's curatorial team, SIAF will develop an exhibition that is only possible within a museum setting.

## 4. Moerenuma Park

Moerenuma Koen 1-1,  
Higashi-ku, Sapporo

**Planning:** HOSOKAWA Asami



Photo by TAKUMA Noriko

Moerenuma Park is an art park designed by the world-renowned sculptor Isamu NOGUCHI, who conceptualized the entire park as a single sculpture. Construction of the park began in 1982, and the park was officially opened in 2005. This vast park, which seamlessly blends nature and art, has been one of SIAF's main venues since its inaugural edition, hosting a wide range of installations and participation opportunities. For SIAF2027, the park will once again serve as a venue, centering on international collaboration programs and offering a place to rethink the relationship between humans and the environment and the future that humankind faces.

## 5. Shiryokan

(Former Sapporo Court of Appeals)

Odori Nishi 13-chome,  
Chuo-ku, Sapporo

**Planning:** URUSHI Takahiro



Photo by TAKUMA Noriko

Built in 1926 as the Sapporo Court of Appeals (later the Sapporo High Court), the building was reopened as the Shiryokan, an archival facility, in 1973 following the court's relocation. Constructed with Sapporo soft stone, it was declared a National Important Cultural Property in 2020. Serving as a consistent hub for citizen participation in SIAF since the inaugural edition, this venue will actualize the SIAF School initiative, initiated in 2023.

## 6. Chuo Ward Office Complex

Minami 3-jo Nishi 11-chome  
330-2, Chuo-ku, Sapporo

**Planning:** URUSHI Takahiro



Combining the Chuo Ward Office, the Chuo Health Center, and the Chuo Ward Community Center, this office complex was opened in February 2025. Featuring interior and exterior designs that incorporate Hokkaido timber and Sapporo soft stone, as well as energy-saving systems and heating generated from drainage water, this facility exemplifies an environmentally conscious building. For SIAF2027, this hub for public services will be transformed into one of the festival's venues.



# The Eight Venues of Planet Snow

**PLANET  
SNOW**  
upas mintar / upas nociw  
**SIAF2027**

## 7. Sapporo Cultural Arts Community Center (SCARTS)

Kita 1-jo Nishi 1-chome, Chuo-ku, Sapporo

Planning: MARUTA Tomoaki



Photo by TAKUMA Noriko

Opened in 2018 as part of urban development in central Sapporo, this facility, together with the Sapporo Cultural Arts Theater "hitaru" and the Sapporo Municipal Library and Information Center, forms the Sapporo Community Plaza, serving as a central hub for cultural arts in the city. As the visitor center and gateway for SIAF2024, SCARTS will become the base for co-creation led by SIAF Studio during SIAF2027.

## 8. Sapporo Snow Festival Odori Site

One block of Odori Park [TBD]  
(Odori Nishi 1 - 11, Chuo-ku, Sapporo)

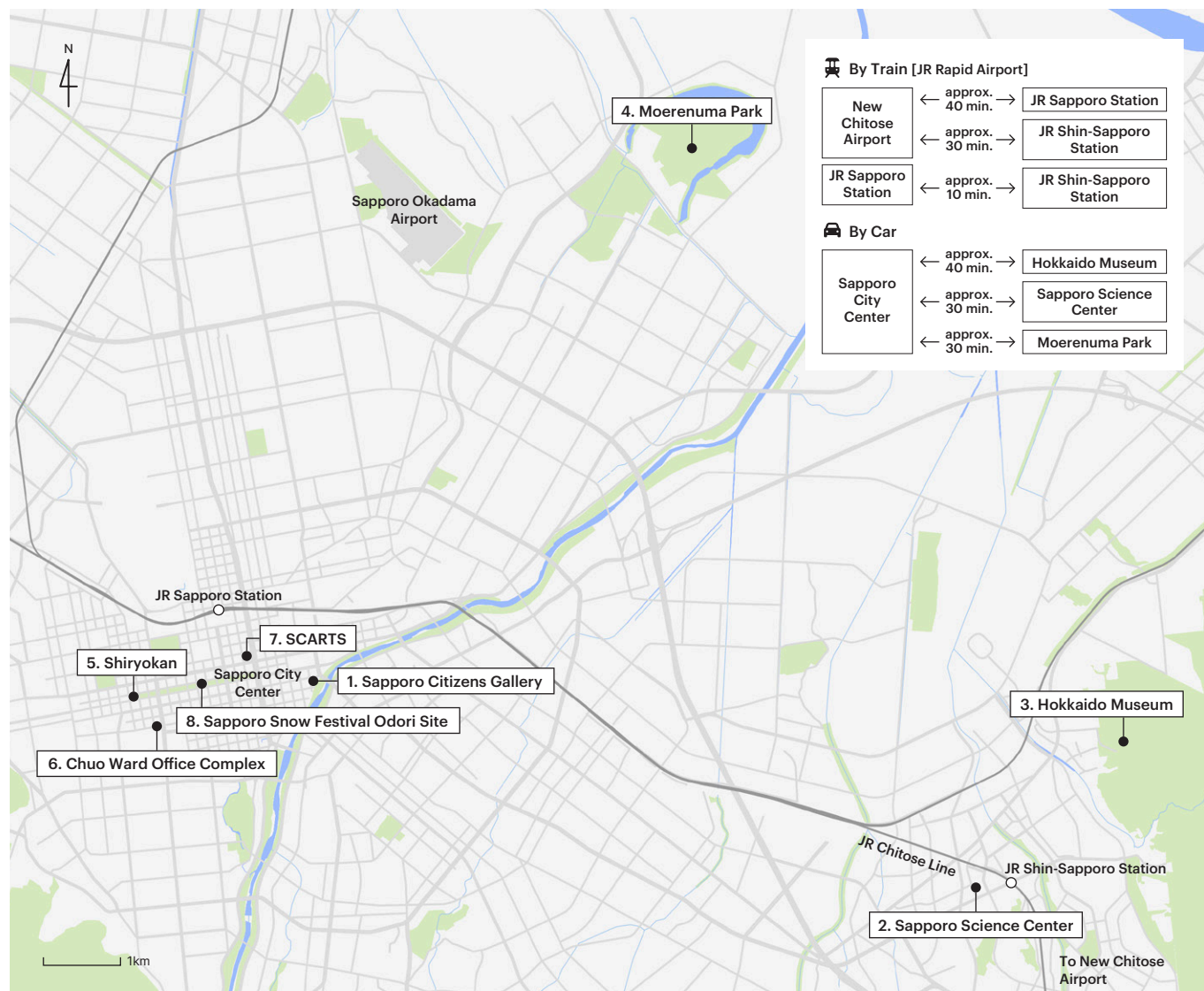
Planning: MARUTA Tomoaki  
Artist: ENESS



Photo by KOMAKI Yoshisato

The Sapporo Snow Festival began in 1950, when local junior and high school students created and displayed six snow sculptures. Today, it has grown into one of Sapporo's largest events, attracting more than two million visitors from across Japan and around the world. During SIAF2024, the first edition held in winter, the entire Odori 2-chome Site was used to represent a "snow city in the future." For SIAF2027, a new exhibition space will be designed to make the most of the venue's size. A large installation will be displayed across a wide area, bringing a sense of festivity to a winter city.

Additional venues will be announced in the future.



## SIAF2027 Production Team



SIAF2027 is taking on the challenge of building a sustainable art festival under a new four-director structure. In addition to the SIAF Advisor and the Ainu Culture Coordinator bringing diverse perspectives, SIAF is introducing two curators who will plan and develop the festival's activities. Furthermore, the festival is incorporating a dramaturg for the first time. Although the role of dramaturg is most commonly associated with the performing arts, during SIAF2027, this role will be responsible for perpetuating the narrative of Planet Snow, designed by the Director Team, throughout the festival to enrich visitors' experience.

### **OGAWA Hideaki**

Artistic Director

OGAWA is the Artistic Director and Managing Director of Ars Electronica Futurelab, a cultural institution located in Linz, and served as the director for SIAF2024. For SIAF2027, OGAWA will oversee the entire director team, supervise the festival's theme and concepts, and plan policies related to the festival's international development.

### **HOSOKAWA Asami**

Festival Director

After working for a television station as an exhibition producer and manager, HOSOKAWA started her career as a festival organizer, focusing on planning and exhibition work. She has been engaged with SIAF since the inaugural edition. At SIAF2024, she served as curator for the exhibition at the Future Theater (Higashi 1-chome Theater). For SIAF2027, she will be responsible for developing the festival's overall policy and supervising its communications strategy. In addition, she will curate exhibitions at the Hokkaido Museum and Moerenuma Park.

### **URUSHI Takahiro**

School Director

URUSHI, Representative Director of AIS Planning, has played an active role in connecting art and society through an artist-in-school program in Hokkaido. He has been engaged with SIAF since the inaugural edition and was responsible for SIAF School during SIAF2024. For SIAF2027, he will again lead the SIAF School initiative, focusing on partnerships with educational institutions (including in-school outreach classes and Education Cafe) and lifelong-learning initiatives (the Fumu Fumu Project). He will also be responsible for the programs at the Shiryokan and the Chuo Ward Office Complex.

### **MARUTA Tomoaki**

Studio Director

MARUTA, representative of Tomoaki Maruta Architects, has been an architect for SIAF since SIAF2017, responsible for making blueprints for each venue, managing exhibition sites, and supporting artists in their creation. He has also been engaged as an architect with the Aichi Triennale. For SIAF2027, in addition to overseeing the design for each venue, MARUTA will lead collaborations with companies and local organizations and curate activities at the Sapporo Cultural Arts Community Center (SCARTS) and the Sapporo Snow Festival Odori Site.



Left to right: URUSHI Takahiro, MARUTA Tomoaki, OGAWA Hideaki, HOSOKAWA Asami

# SIAF2027 Production Team

PLANET  
SNOW  
upas mintar / upas nociw  
SIAF2027

## YAMAZAKI Naoko

Advisor

YAMAZAKI is an astronaut and the Honorary Director of the Sapporo Science Center. She lived in Sapporo from kindergarten through second grade. In 2001, she was officially certified as an astronaut by the National Space Development Agency of Japan (NASDA)—currently the Japan Aerospace Exploration Agency (JAXA). In April 2010, YAMAZAKI flew aboard Space Shuttle Discovery as part of the STS-131 crew, an assembly and resupply mission to the International Space Station (ISS). Serving as an advisor, YAMAZAKI will bring a scientific perspective to SIAF2027's narrative.



©NASA

## KANAZAWA Kodama

Dramaturg / Curator

KANAZAWA is a contemporary art curator and the Special Project Director at the Institute of Contemporary Arts Kyoto. After working at the Contemporary Art Museum, Kumamoto and the Kawasaki City Museum, she became independent and has since been involved with numerous exhibitions and art festivals. From 2017 to 2020, she served as Chief Curator at the Towada Art Center. For SIAF2027, KANAZAWA will draw on her experience in experimental curation of creative narratives to serve as the festival's dramaturg, overseeing its overall narrative. In addition, she will also curate the exhibition at the Sapporo Citizens Gallery.



Photo by Una Zhu

## NISHI Tsubasa

Curator

A curator at the Yamaguchi Center for Arts and Media (YCAM), NISHI is primarily responsible for exhibition planning and is also involved in R&D projects and human resource development programs. During SIAF2024, he served as project manager for the Moerenuma Park venue, overseeing programs and works held outdoors or in snow storage spaces. For SIAF2027, NISHI will be responsible for curating the exhibition at the Sapporo Science Center.



Photo by Irena

## Mayunkiki

Ainu Culture Coordinator

A member of Marewrew and Apetunpe, groups dedicated to performing traditional Ainu songs, Mayunkiki is an active artist who explores the Ainu's presence and identity in contemporary society from a deeply personal perspective. She joined SIAF2017 as a project member and has served as the Ainu Culture Coordinator since SIAF2020, developing the official Ainu-language title and theme of SIAF and providing specialized advice to artists.



Photo by IKEDA Hiroshi

## Wabisabi / SHIRAI Hiroaki

Art Director & Designer

Wabisabi is a design unit consisting of KUDO "Wabi" Ryohei and NAKANISHI "Sabi" Kazushi. SHIRAI Hiroaki is a freelance graphic designer based in Sapporo. Teaming up since SIAF2020, the two parties will collaborate and create the iconic visuals of SIAF2027.





# The Artists and Works of PLANET SNOW

PLANET  
SNOW  
upas mintar / upas nociw  
SIAF2027

The world of Planet Snow opens its doors with the first list of participating artists.

Three Hokkaido-born/based artists have been selected: sculptor **KAWAKAMI Rie**, who, amid the harsh nature of Ishikari City, engages deeply with iron while contemplating the geological timescale of Earth, otherwise known as "deep time"; **shigechanland (ONISHI Shigenari)**, based in Tsubetsu Town, assembles driftwood and found objects to summon mysterious creatures; and **WAKAKI Kurumi**, who humorously depicts the world using astonishing printmaking techniques that sometimes involve her entire body.

At the Hokkaido Museum, **ISHIGURO Hiroshi / FUTURE OF LIFE Laboratory** will present an android inheriting the "Future of Life," a Signature Pavilion of Expo 2025 in Osaka, Japan, that provoked questions on the nature of life. Fashion designer **NAKAZATO Yuima**

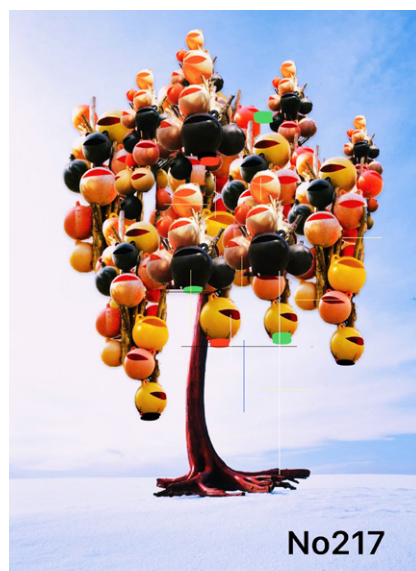
will present a site-specific installation with his latest collection, "GLACIER," inspired by his fieldwork in frigid regions covered with glaciers. **Fragmentin**, a media art collective from Switzerland, plans to showcase a new work based on their research to be conducted in Sapporo, and French animation artist **Boris LABBÉ** will also present his latest piece. **HIWA Kazuhiko** will take part in venue design, drawing on the findings from his SIAF2024 research conducted using a wheelchair as his medium. **ENESS**, an Australian art and technology studio, will return to the Sapporo Snow Festival venue with their latest award-winning, interactive balloon installation, a light and sound artwork in the form of enormous rocks. Continuing from the previous edition, the Sapporo-based new wave techno-pop duo **LAUSBUB** will create the theme song for SIAF2027.



KAWAKAMI Rie "Landscape Will 2019" 2019 Photo by MAEZAWA Yoshiaki



WAKAKI Kurumi "Blow on a Poppin, Young Lady" 2020



shigechanland (ONISHI Shigenari) "No217" 2025



● ENESS "Iwagumi Air Scape" Photo by Finbarr FALLON

Works marked with a "●" are scheduled for exhibition; those without are reference works.



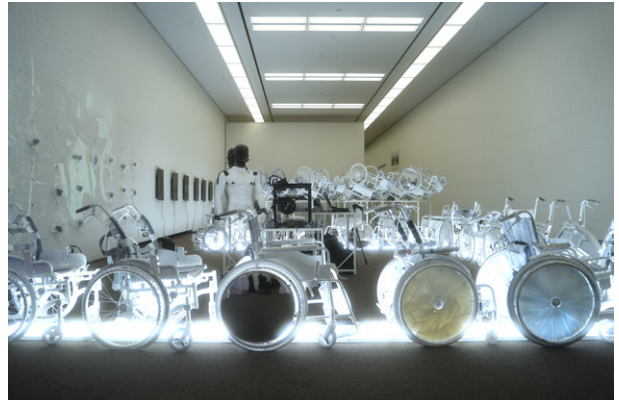
# The Artists and Works of PLANET SNOW

PLANET  
SNOW  
upas mintar / upas nociw  
SIAF 2027

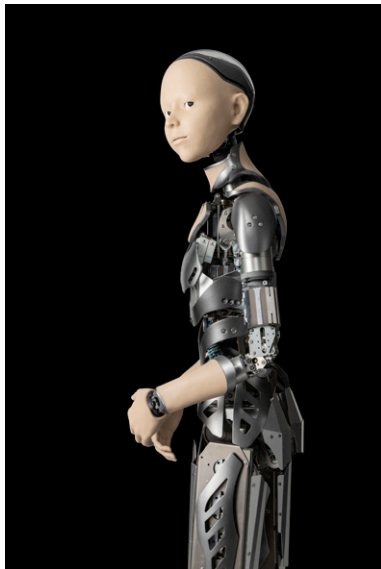


Fragmentin "GLOBAL WIRING" 2023

Supported by  
Vitality  
Swiss



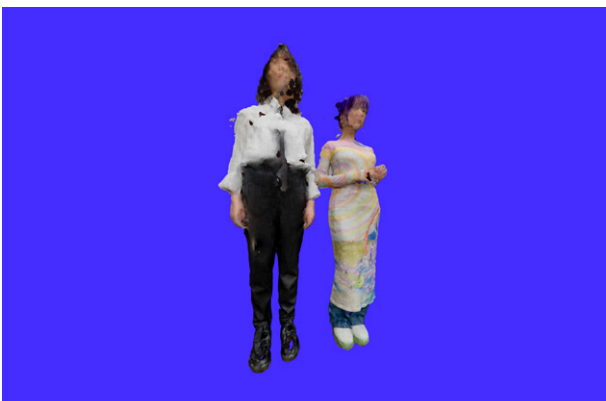
HIWA Kazuhiko "walkingpractice feat.HIWADROME" 2023



● ISHIGURO Hiroshi / FUTURE OF LIFE Laboratory "Yamatoroid"  
©FUTURE OF LIFE



Boris LABBÉ "SIRKI" 2019



LAUSBUB



NAKAZATO Yuima Photo by NAKAZATO Yuima

Works marked with a "●" are scheduled for exhibition; those without are reference works.

# Sapporo International Art Festival 2027 Overview

As of December 19, 2025

**PLANET  
SNOW**  
upas mintar / upas nociw  
**SIAF2027**

<b>Title</b>	札幌国際芸術祭2027 (Japanese) Sapporo International Art Festival 2027 (English) Usa Mosir un Askay utar Sapporo otta Uekarpa 2027 (Ainu)	
<b>Abbreviation</b>	SIAF2027	
<b>Theme</b>	PLANET SNOW upas mintar / upas nociw	
<b>Dates</b>	January 16 (Sat) – February 21 (Sun), 2027 • Sapporo Science Center: January 5 (Tue) – February 21 (Sun) • Sapporo Snow Festival Odori Site: In accordance with the 2027 Sapporo Snow Festival * Some venues will be closed on certain days.	
<b>Venue</b>	Sapporo Citizens Gallery Hokkaido Museum Shiryokan (Former Sapporo Court of Appeals) Sapporo Cultural Arts Community Center (SCARTS)	Sapporo Science Center Moerenuma Park Chuo Ward Office Complex Sapporo Snow Festival Odori Site
<b>Artist</b>	KAWAKAMI Rie WAKAKI Kurumi Fragmentin ISHIGURO Hiroshi / FUTURE OF LIFE Laboratory LAUSBUB	shigechanland (ONISHI Shigenari) ENESS HIWA Kazuhiko Boris LABBÉ NAKAZATO Yuima
<b>Director Team</b>	OGAWA Hideaki (Artistic Director) HOSOKAWA Asami (Festival Director) URUSHI Takahiro (School Director) MARUTA Tomoaki (Studio Director)	
<b>Advisor</b>	YAMAZAKI Naoko	
<b>Dramaturg</b>	KANAZAWA Kodama	(Planet Snow Narrative Lead)
<b>Curator</b>	KANAZAWA Kodama (Sapporo Citizens Gallery Venue Curator) NISHI Tsubasa (Sapporo Science Center Venue Curator)	
<b>Ainu Culture Coordinator</b>	Mayunkiki	
<b>Art Director &amp; Designer</b>	Wabisabi / SHIRAI Hiroaki	
<b>Organizer</b>	Sapporo International Art Festival Executive Committee / City of Sapporo	
<b>Supported by</b>	Agency for Cultural Affairs, Government of Japan Embassy of Switzerland in Japan	

# Winter 2026 Pre-Events



SIAF will once again hold three pre-events this winter.

SIAF will present a much-talked-about piece that was previously shown at Expo 2025 in Osaka, Japan, at the Sapporo Snow Festival Odori Site. In addition, SIAF will host "Let's Upaste!! 2026 Sapporo Winter Arts Tour," a program that brings together Sapporo's winter art events, and "SIAF School Education Cafe Special Edition: STEAM STUDY DAY 2026 –Let's experience the future of schools! Workshop and talk event–," a festival of workshops by school teachers and artists.

## 1. Sapporo International Art Festival Winter Pre-event @ Sapporo Snow Festival Odori 6-chome Site

**Period:** Feb 4 (Wed) – 11 (Wed, holiday), 2026 10:00–20:00

**Venue:** Sapporo Snow Festival Odori 6-chome Site (west side)

The Sapporo Snow Festival and SIAF are collaborating once again this year. A special program focused on art exhibitions is being planned.



### ○ Outdoor Exhibition

#### HIWA Kazuhiko "HIWADROME: type\_ark\_spec2" 2025

SIAF will exhibit a large-scale artwork by SIAF2027 participating artist HIWA Kazuhiko, created using more than 70 wheelchairs as its "material." The work was first displayed at Expo 2025 Osaka, Kansai, where it attracted significant attention.



HIWA Kazuhiko "HIWADROME: type\_ark\_spec2" 2025  
Exhibition at the Expo 2025 venue on Yumeshima

### ○ Special Tent

#### Fujimori "My Code [snow crystals, trees and stars] + My Monster" 2025

This showcase features the results of outreach classes conducted by SIAF in partnership with the artist unit Fujimori and Wacom Co., Ltd. at elementary and junior high schools across Sapporo. A selection of original works created by participating students will be projected inside the tent.



Left: SIAF School Outreach Classes "Create Your Own Monster-Ideation Workshop by Wacom–"  
Right: Fujimori "My Code [snow crystals, trees and stars]" 2025

### ○ Related Program

#### Fumu Fumu Project [Language: Japanese]

Fumu Fumu Supporters will welcome visitors to the venue and guide them through the exhibited works for a deeper experience. On the final day, local children will take on the role of guides for the first time in SIAF history.



Photo by FUKUKURA Tsubana

Fumu Fumu Supporters guiding Sapporo International Art Festival in Sapporo Snow Festival Odori 6-chome Site (Feb 4–11, 2025)

### ○ Outdoor Panel

#### Connected to the World, "Media Arts City Sapporo"

This panel introduces the UNESCO Creative Cities Network (UCCN), a global network that places creativity at the core of urban development. This addition will highlight the 27 cities in 26 countries that participate in the UCCN Media Arts Field, of which Sapporo is a participating member.



UNESCO Creative Cities Network Annual Conference  
©Bastien André / UNESCO / Ville d'Enghien-les-Bains



## 2. Let's Upaste!! 2026 Sapporo Winter Arts Tour

**Period:** Jan 10 (Sat) – Feb 28 (Sat), 2026  
**Venue:** Various locations around Sapporo

The website is currently  
available in Japanese.  
English pages will be  
added at a later date.



"Let's Upaste!!" is a program to invite you to explore winter art events in Sapporo. Upaste, derived from "upas," meaning "snow" in the Ainu language, carries the meaning of "running together into the future while we recognize one another." This year, 26 unique events organized by 22 groups will be held. Please use the guide map and website for more details. We invite you to explore the city and Sapporo's art scene in the winter.

\* "Let's Upaste!! 2026" called for cooperation from SIAF2024 venues, open-call and collaboration project organizers, as well as university and vocational school graduation exhibitions held in the city during the event period.



## 3. SIAF School Education Cafe Special Edition: STEAM STUDY DAY 2026 –Let's experience the future of schools! Workshop and talk event–

**Period:** Feb 28 (Sat), 2026 10:00–17:00  
**Venue:** Chuo Ward Office Complex Residents' Gallery  
**Target:** Elementary/junior high school students, teachers, artists, educational personnel

Education Cafe is a community where school teachers and other education personnel gather to develop experimental approaches that connect art and education. In this special edition, teachers and artists will lead several experimental workshops under the theme "The Future of Schools Created Through STEAM Education." New programs currently being developed through SIAF School will also be held. To conclude the event, a symposium will be held to discuss the future of education, exploring in depth the possibilities of "education and art" in preparation for SIAF2027. Details will be announced on the website at a later date.



SIAF School Education Cafe "STEAM STUDY DAY in SCARTS 2025"

## SIAF2027 Visitor Support Program "Fumu Fumu Project" Now Calling for Participants!

The Fumu Fumu Project is designed to help visitors enjoy the Sapporo International Art Festival more deeply by providing various forms of support. SIAF is currently recruiting Fumu Fumu Supporters to play an active role in these support activities.

### ●Activities

Supporters will assist visitors at SIAF2027 and related events, providing directions and leading guided tours of exhibitions.

### ●Participation Requirements

Must be 15 years or older

Must be able to work cooperatively with other participants and staff

\* Junior high school students are ineligible to participate

\* High school students or participants under 18 must submit a guardian consent form.

More details about the Fumu Fumu Project can be found on the SIAF official website.



This webpage  
is available only  
in Japanese.



Future Theater Gallery Tour in Japanese Sign Language by Fumu Fumu Supporters

Photo by MOMMA Yurika

Contact for Inquiries

Sapporo International Art Festival Executive Committee

Sapporo Tokeidai Bldg. 10F, Kita 1-jo Nishi 2-chome, Chuo-ku, Sapporo 060-0001 Japan

TEL: +81-11-211-2314 FAX: +81-11-218-5157 E-mail: press@siaf.jp